

Application Note

by Almax easyLab Marketing Department

Few years ago, Almax easyLab acquired the products of HPDO (the company in Tuscon who was making your cells – so called M-A-II). We have repaired many of these M-A-II over the past few years.

The repair usually falls in **two categories**:

Option 1: Either we can reglue the anvils which can be salvaged, this service is named **P01500** (repair M-A-II HPDO/Diasqueeze).

Regluing and realignment of the existing anvils, typical leadtime: 2 working weeks, €450 (excl. transportation).

Option 2: Alternatively and after inspection we sometimes realise that the anvils are damaged and would need replacement. This service is more expensive as we need new seats and anvils. This service is named **P01500UPGRADE**. We inform the customer before proceeding in this latter case.

2 new anvils with the below specifications :

Diamond anvil, type IIag CVD, Boehler-Almax design, 8-sided, diameter 2.30 mm - 30°, culet of 0.80 mm, (100)-oriented [P02623]

2 new seats with the below specifications :

M-A-II, Hemispherical Mount (95°)(Rev 03) [P01612]

M-A-II, Flat Diamond Mount (95°) (Rev 03) [P01611]

Regluing and realignment. Typical lead time: 8 working weeks. Price: €2,500 (excl. transportation).

Before sending us your HPDO M-A-II for repair, you will need to obtain a RMA reference number from us with some instructions to follow to send the cell back to us.



Figure: M-A-II with unglued anvils



Figure: M-A-II with reglued anvils

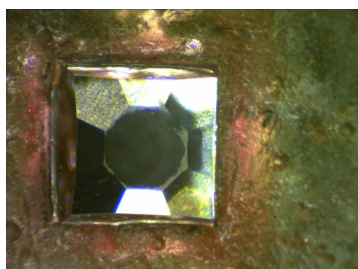


Figure: M-A-II with damaged anvil

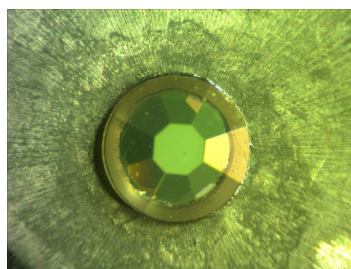


Figure: M-A-II with new Boehler-Almax anvil